



# Hibou Air Quality Monitoring

## Hibou Air Quality Monitoring For everyone

Affordable wireless device with simple setup that provides all environments data for observations and study to preserve a healthy air quality environment.



The intelligent Air quality sensor system installs in seconds and connects to your Dashboard account, providing real time Air quality Data.

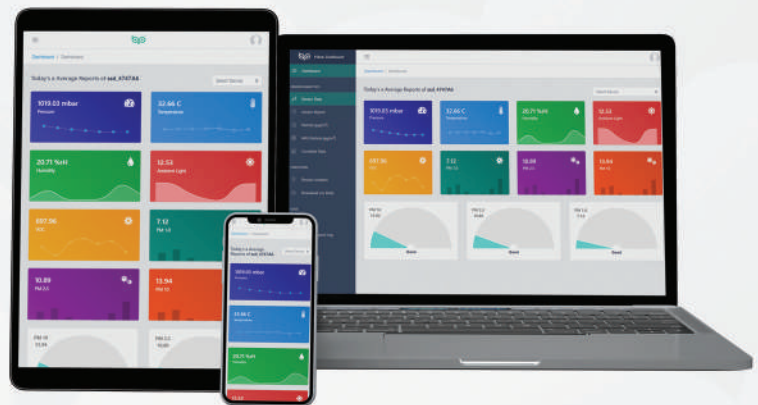
## Comes With **Particle** or **CO2** sensor

Particle Sensor (Model : SSD 002/1) , CO2 Sensor (Model : SSD 002/2)



Hibou Air Quality Monitoring App is available for all devices.

*\* Available on iPhone, iPad and all Android devices.*



The web-based application runs on every web-enabled device. Explore Your Data Visually using various maps, charts and graphs on different devices.



Smart  
Sensor  
Devices

[www.smartsensordevices.com](http://www.smartsensordevices.com)  
[sales@smartsensordevices.com](mailto:sales@smartsensordevices.com)  
+46 703 709 706

## Sensor Specifications

Roles	Wifi Client Bluetooth v5.0 Peripheral.
Security	X.509 certificate.
Connectivity	802.11n (2,4 GHz) Wi-Fi Bluetooth 5.0
Power	Micro USB, Low power: Typ 45mA , peak 400mA (at Wifi transmission). Possible to use external power bank for portable use
Sensors	<ul style="list-style-type: none"><li>● Temperature, range: -20...65°C Accuracy: <math>\pm 1^{\circ}\text{C}</math></li><li>● Humidity, range: 0...100% r.H. Accuracy: <math>\pm 3\%</math> r.H.</li><li>● VOC (Organic Compounds) CO equivalent</li><li>● Pressure, range: 300...1100 hPa <math>\pm 0.6</math> hPa</li><li>● Ambient light: resolution 100mLux</li></ul> <p><u>PM Sensor (Model : SSD 220/1)</u></p> <ul style="list-style-type: none"><li>● Particulate Matter (PM1.0 , PM 2.5 &amp; PM 10): resolution 0.3 <math>\mu\text{g}/\text{m}^3</math> . Max Error <math>\pm 15\%</math></li></ul> <p><u>CO2 Sensor (Model : SSD 220/2)</u></p> <ul style="list-style-type: none"><li>● NDIR CO2 sensor, Fully calibrated and linearized.</li><li>● Measurement Range : 400ppm - 10000ppm</li><li>● Accuracy : +/- (30 ppm 3%)</li></ul>
Mechanical	73,2 mm (L) , 50 mm (W) 12,4 mm (D)
Environmental	Temperature: - 20°C to +65°C Humidity: 95% Ingress Protection: IP42 (Indoor use and Outdoor with extra protection case)
Mounting	Wall mounted holder.
Case Material	ABS
Certification	FCC & CE, RoHS compliant, halogen-free
Colors	White or Black

## How It Works



### Install the App

Download and install the Hibou Air Quality app from Google Play / App Store.



### Connect your device

Connect your device to a power source and get close to the device to setup Bluetooth and Wifi.



### Enjoy the features!

The device will accurately inform you about the air quality through app or your cloud dashboard account.

